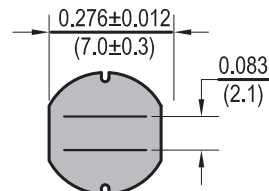
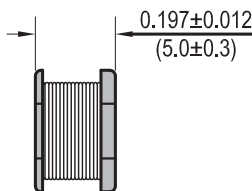
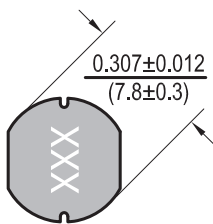




Dimensions:  $\frac{\text{Inches}}{\text{(mm)}}$



Allied Part Number	Inductance (μh)	Tolerance (%)	Test Freq.	DCR Max. (Ω)	IDC (A)
PC0705-1R0M-RC	1.0	20	2.52MHz	0.02	3.7
PC0705-1R4M-RC	1.4	20	7.96MHz	0.02	3.7
PC0705-1R5M-RC	1.5	20	7.96MHz	0.02	3.7
PC0705-1R8M-RC	1.8	20	7.96MHz	0.02	3.7
PC0705-2R2M-RC	2.2	20	7.96MHz	0.02	3.7
PC0705-2R7M-RC	2.7	20	7.96MHz	0.02	3.7
PC0705-3R3M-RC	3.3	20	7.96MHz	0.03	3.7
PC0705-3R9M-RC	3.9	20	7.96MHz	0.03	3.7
PC0705-4R7M-RC	4.7	20	7.96MHz	0.04	3.5
PC0705-5R6M-RC	5.6	20	7.96MHz	0.04	3.3
PC0705-6R8M-RC	6.8	20	7.96MHz	0.04	3.1
PC0705-8R2M-RC	8.2	20	7.96MHz	0.05	2.7
PC0705-100M-RC	10	20	2.52MHz	0.07	2.3
PC0705-120M-RC	12	20	2.52MHz	0.08	2.0
PC0705-150M-RC	15	20	2.52MHz	0.09	1.8
PC0705-180M-RC	18	20	2.52MHz	0.10	1.6
PC0705-220M-RC	22	20	2.52MHz	0.11	1.5
PC0705-270M-RC	27	20	2.52MHz	0.12	1.3
PC0705-330M-RC	33	20	2.52MHz	0.13	1.2
PC0705-390M-RC	39	20	2.52MHz	0.16	1.1
PC0705-470M-RC	47	20	2.52MHz	0.18	1.1
PC0705-560M-RC	56	20	2.52MHz	0.24	0.94
PC0705-680M-RC	68	20	2.52MHz	0.28	0.85
PC0705-820M-RC	82	20	2.52MHz	0.37	0.78
PC0705-101M-RC	100	20	1KHz	0.43	0.72
PC0705-121M-RC	120	20	1KHz	0.47	0.66
PC0705-151M-RC	150	20	1KHz	0.64	0.58
PC0705-181M-RC	180	20	1KHz	0.71	0.51
PC0705-221M-RC	220	20	1KHz	0.96	0.49
PC0705-271M-RC	270	20	1KHz	1.11	0.42
PC0705-331M-RC	330	20	1KHz	1.26	0.40
PC0705-391M-RC	390	20	1KHz	1.77	0.36
PC0705-471M-RC	470	20	1KHz	1.96	0.34
PC0705-561M-RC	560	20	1KHz	2.41	0.32

All specifications subject to change without notice.

### Features

- Unshielded SMD Power Inductor
- Suitable for large currents
- Ideal for DC-DC converter applications
- Flat top for pick and place assembly

### Electrical

**Inductance Range:** 1μh to 560μh

**Tolerance:** 20% over entire range

Also available in tighter tolerances

**Operating Temp:** -40°C ~ +85°C

**IDC:** Current at which Inductance drops 10% of original value with a ΔT= 40 C whichever is lower.

### Resistance to Soldering Heat

Pre-Heat 150°C, 1 Min.

**Solder Composition:** Sn/Ag3.0/Cu0.5

**Solder Temp:** 260°C +/- 5°C for 10 sec ± 1 sec.

### Test Equipment

**(L):** HP4192A LF Impedance Analyzer

**(RDC):** Chen Hwa 502BC

**(IDC):** HP4284A with HP42841A or Chen Hwa 1061 + Chen Hwa 301A

### Physical

**Packaging:** 700 pieces per 13 inch reel.

**Marking:** EIA Inductance Code.